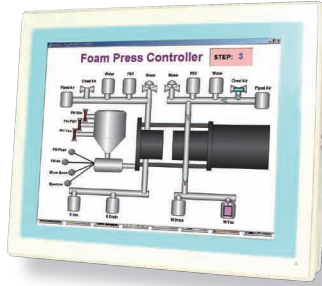




# T1260

12.1" AMD® LX900 Ultra Slim Panel PC



## Features

- Soldered Onboard AMD® LX900 600MHz CPU
- 12.1" 800 x 600 SVGA Color TFT LCD Display
- Super Slim and Compact Mechanical Design
- S.D.R. (Smart Data Recovery) Design
- Isolated Serial Ports (RS-232/422/485)
- Flush Front Panel NEMA4/IP65 Compliant
- PC/104 Expansion Bus
- Compatible with OPC and SCADA Application Software
- Fanless Design
- Wide Range DC Input

## System

<b>CPU</b>	AMD® LX900 600MHz CPU
<b>Memory</b>	1 x 200-pin SO-DIMM Socket support DDR 200MHz SDRAM up to 1GB Soldered onboard 512KB FRAM for S.D.R.
<b>Chipset</b>	AMD® LX900 + CS5536
<b>LAN</b>	1 x Realtek RTL8110SCL 10/100/1000Base-T
<b>Watchdog Timer</b>	Programmable as 250ms, 500ms, 1 second

## Storage

<b>HDD/Type</b>	1 x 2.5" drive bay for SATA HDD/SSD
<b>Flash Disk</b>	1 x CompactFlash Type II Socket

## LCD Display

<b>Size/Type</b>	12.1" TFT LCD
<b>Max. Resolution</b>	800 x 600, SVGA
<b>Backlight Life</b>	50,000 hours
<b>Luminance</b>	370 cd/m <sup>2</sup>
<b>Max. Colors</b>	262,144

## Touch Screen

<b>Type</b>	8-wire, Analog resistive
<b>Light Transparency</b>	Above 80%
<b>Lifespan</b>	10 million touches at single point

## I/O

<b>Serial Port</b>	3 x Isolated RS-232 ports 1 x Isolated RS-422/485 port (with optical isolation design of 3.75KV)
<b>USB Port</b>	2 x USB 2.0 (Host)
<b>KB/MS</b>	1 x PS2 Keyboard and Mouse
<b>Expansion Bus</b>	1 x PC/104

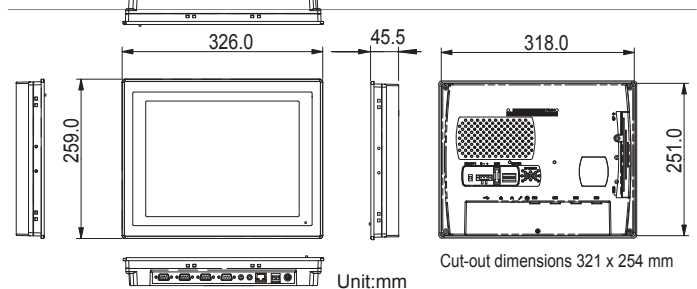
## Power System

<b>Connector</b>	One ME-050 3-pin DC jack for power adapter
<b>Power Input</b>	DC 9 ~ 33V
<b>Power Consumption</b>	25W

## Mechanical & Environmental

<b>Operating Temp.</b>	0 ~ 50°C (32 ~ 122°F)
<b>Storage Temp.</b>	-20 ~ 60°C (-4 ~ 140°F)
<b>Operating Humidity</b>	10 ~ 95% RH @40°C (non-condensing)
<b>Ingress Protection</b>	Front panel: NEMA4, IP65
<b>Vibration Protection</b>	1 Grms (with CF or SSD)
<b>Dimensions (WxDxH)</b>	326 x 45.5 x 259 mm (12.83" x 1.79" x 10.2")
<b>Weight (Net)</b>	3.2 kg (7.1 lb)
<b>Enclosure</b>	Aluminum (Front Panel), PC + ABS (Bezel)

## Dimensions



## Ordering Information

<b>T1260-E</b>	12.1" AMD® LX900 ultra slim fanless touch panel computer barebone w/o FRAM, isolated COM and memory
<b>T1260</b>	T1260-E with FRAM, isolated COM, 512MB SDRAM
<b>VMB-1260</b>	T1260/T1261 VESA mount bracket kit
<b>ARM-934</b>	VESA-75/100 desktop LCD monitor stand
<b>PAC-P065W</b>	65W AC/DC adapter kit

All specifications are subject to change without notice.

Computer on Module

Compact Board

Slot Board

Industrial Motherboard

Wide Temperature

SPC Daughterboard Power Connector Mounting Kit

Rugged Tablet PC

Medical PC

Industrial Panel PC/Monitor

Box PC

Industrial Chassis /Backplane/ Power supply