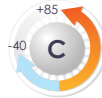
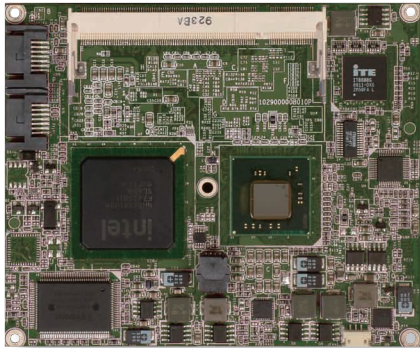




ETX-742E

Wide Range Operating Temperature Intel® Atom™ N450 ETX® CPU Module



ETX

Features

- Fanless Design
- Soldered Onboard Intel® Atom™ N450 1.6GHz Processor
- Single Channel 18-bit LVDS, and Analog RGB
- Multi-expansion (2 x SATA on CPU Module, 1 x PATA, 4 x USB, 2 x Serial Ports, 4 x PCI Masters, ISA Bus)
- Wide Range Operating Temp.: -40 ~ 85°C

System

CPU	Intel® Atom™ N450 1.6GHz CPU
Memory	1 x 200-pin DDR2 SO-DIMM Socket supporting 667MHz SDRAM up to 1GB
Chipset	Intel® Atom™ N450 + ICH8M
BIOS	AMI PnP Flash BIOS
Storage	1 x Ultra ATA, support 2 IDE devices 2 x Serial ATA ports with 300MB/s HDD transfer rate
Watchdog Timer	1~255 levels reset

I/O

I/O Chip	Winbond W83627HG
Serial Port	2 x COM ports (1 x RS-232, 1 x RS-232/422/485 selectable via PBE-1000)
Parallel Port	SPP/EPP/ECP mode
Floppy	1 x Floppy disk drive shared with parallel port
USB Port	4 x USB 2.0 ports
KB/MS	PS/2 interface for Keyboard and Mouse (via PBE-1000)
Expansion Bus	PCI (4 x PCI Masters) and ISA bus

Ethernet

Chipset	1 x Realtek 8103EL PCIe 10/100Base-T Ethernet controller
----------------	--

Audio

CODEC/Interface	Realtek ALC888 7.1 Channel HD Audio CODEC, Mic-in/Line-in/Line-out
------------------------	--

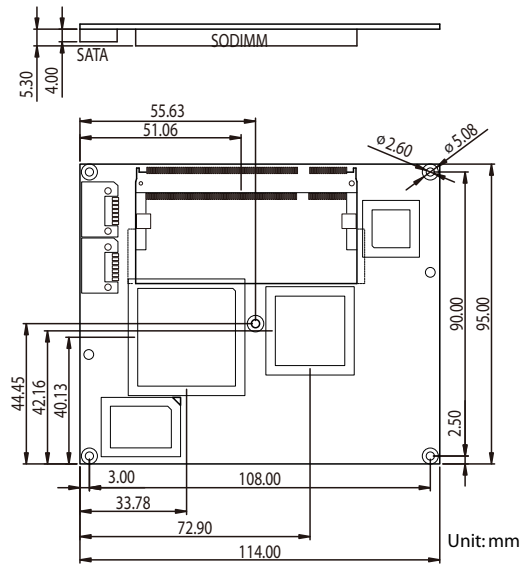
Display

Graphics Chipset	Integrated Intel® Graphics Media Accelerator Gen3.5
Graphics Interface	Analog RGB support up to 1400 x 1050 @60Hz LCD: Single Channel 18-bit LVDS, up to 1280 x 800

Mechanical & Environmental

Power Consumption	TBD
Operating Temp.	-40 ~ 85°C (-40 ~ 185°F)
Operating Humidity	0 ~ 90% (non-condensing)
Dimension (L x W)	114 x 95 mm (4.5" x 3.7")

Dimensions



Ordering Information

ETX-742E	Intel® Atom™ N450 1.6GHz ETX® CPU module
HS-0742-W1	Heatsink wave type (114 x 95 x 19 mm)
HS-0742-F1	Heat spreader (114 x 95 x 8 mm)
PBE-1000 R2.1	ETX® evaluation board in ATX form factor Page 1-20
CBK-05-1000-00	Cable kit for PBE-1000 R2.1 1 x FDD cable 3 x COM port cables 1 x USB cable 2 x IDE cables 1 x TV-out cable

All specifications are subject to change without notice.

Computer on Module

Compact Board

Slot Board

Industrial Motherboard

Wide Temperature

SBC Daughterboard Power Converter Mounting Kit

Rugged Tablet PC

Medical PC

Industrial Panel PC/Monitor

Box PC

Industrial Chassis /Backplane/ Power supply